

# Suites préhistoriques

atelier de robotique



par

CaraVan



## Crédits

<https://www.teacherspayteachers.com/Store/Miss-Pickles-Graphics>

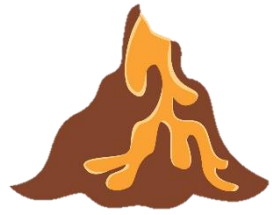
<https://www.teacherspayteachers.com/Store/Our-Monitos>

<https://www.teacherspayteachers.com/Store/Sillyodesign-Clipart>

<https://www.teacherspayteachers.com/Store/Ashley-Hughes-A-Hughes-Design>

<http://kimberlygeswein.com>





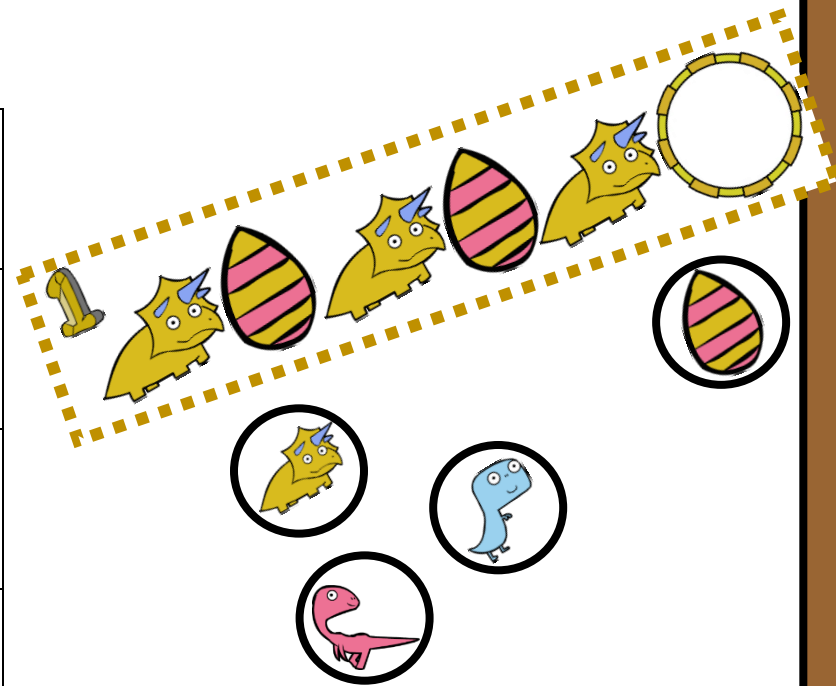
# Suites préhistoriques

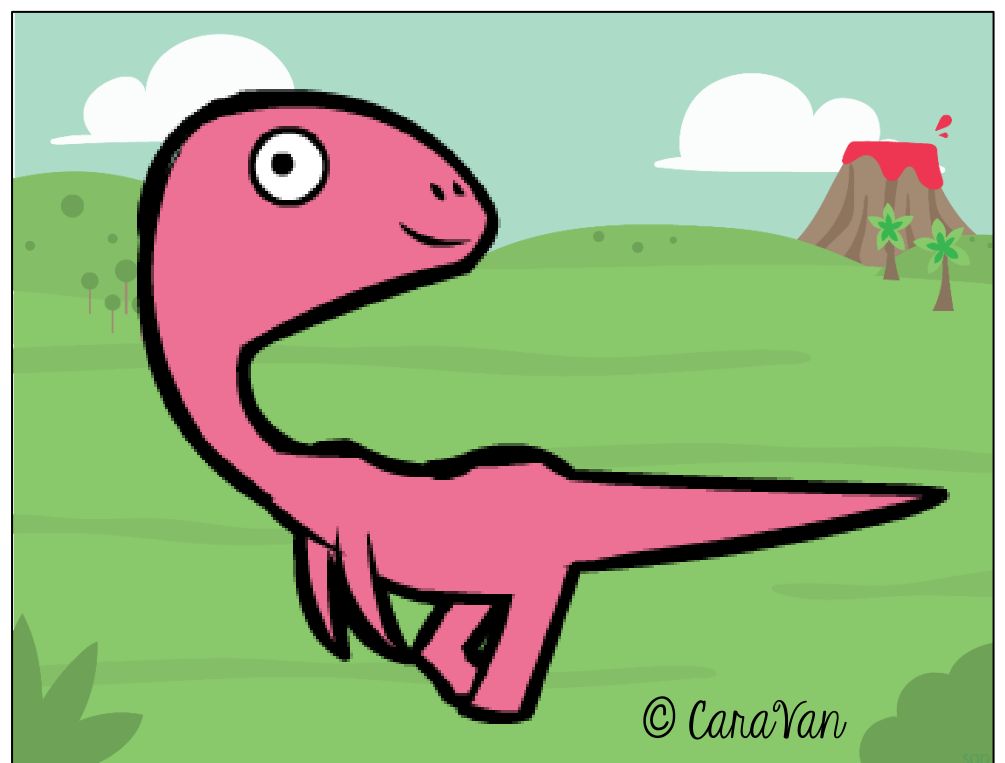
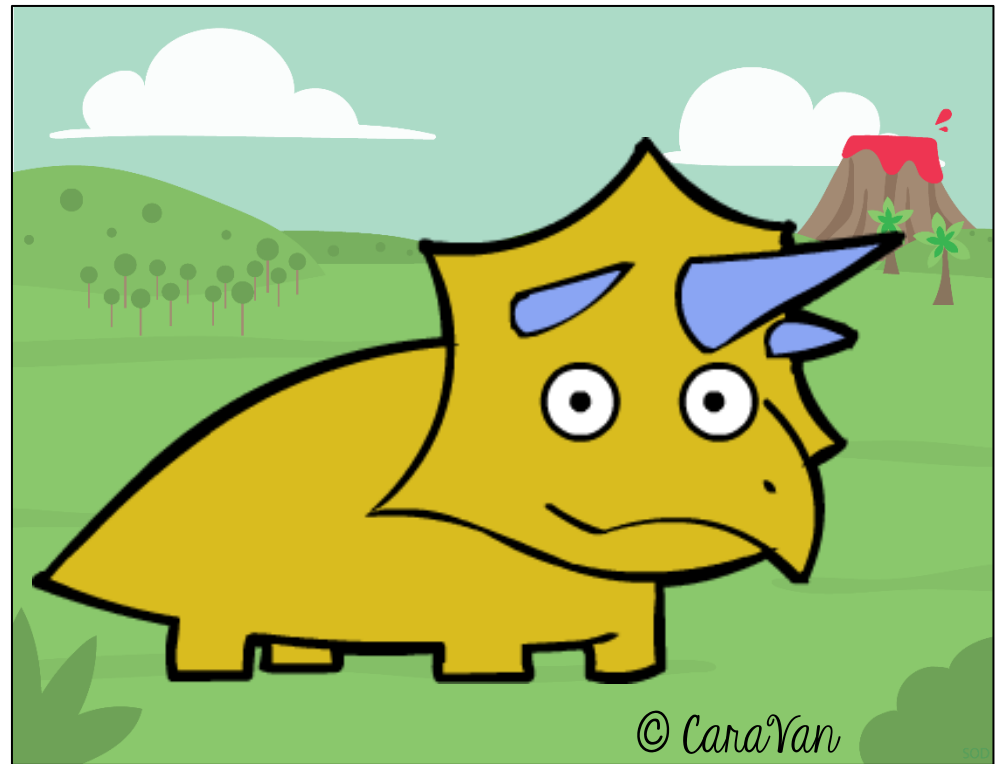
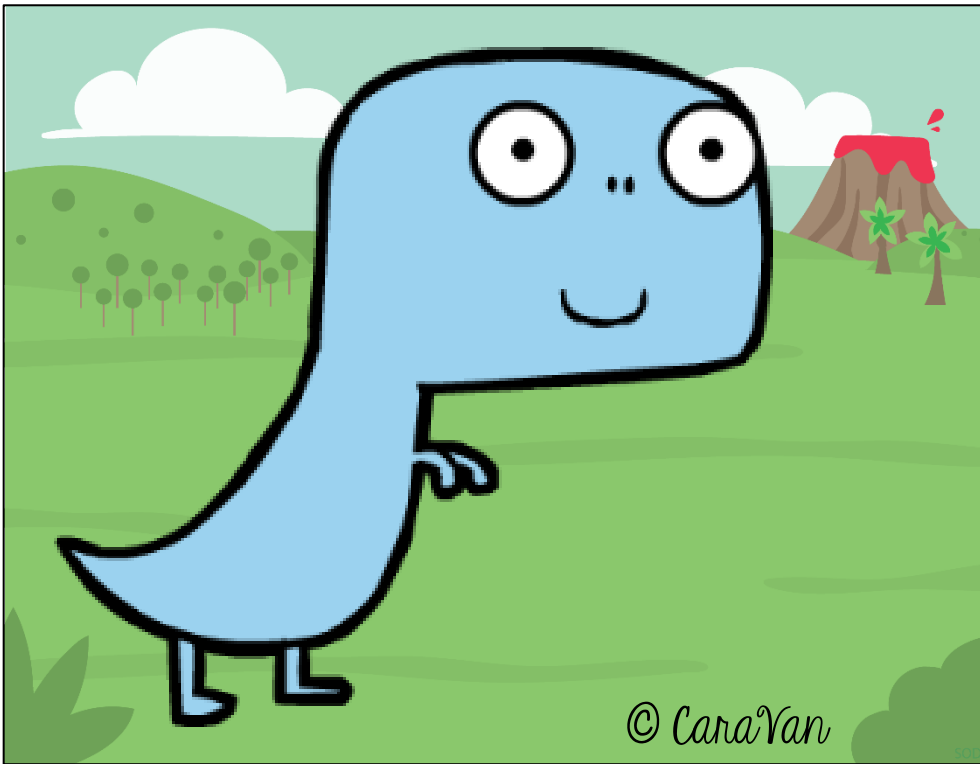
## Consignes:

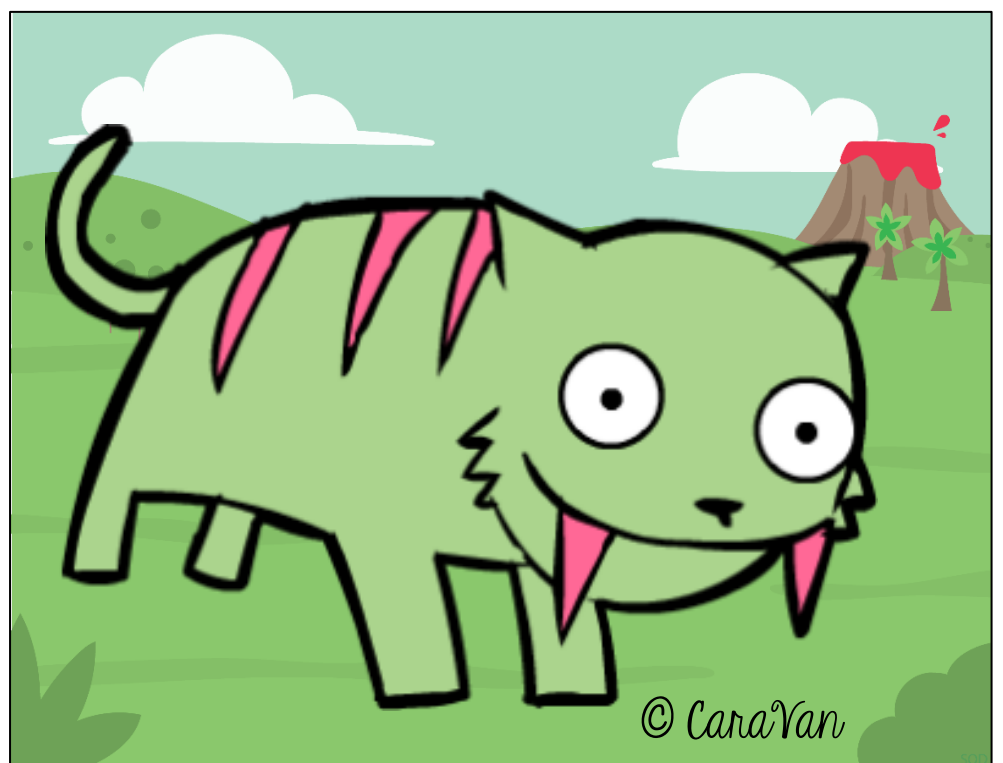
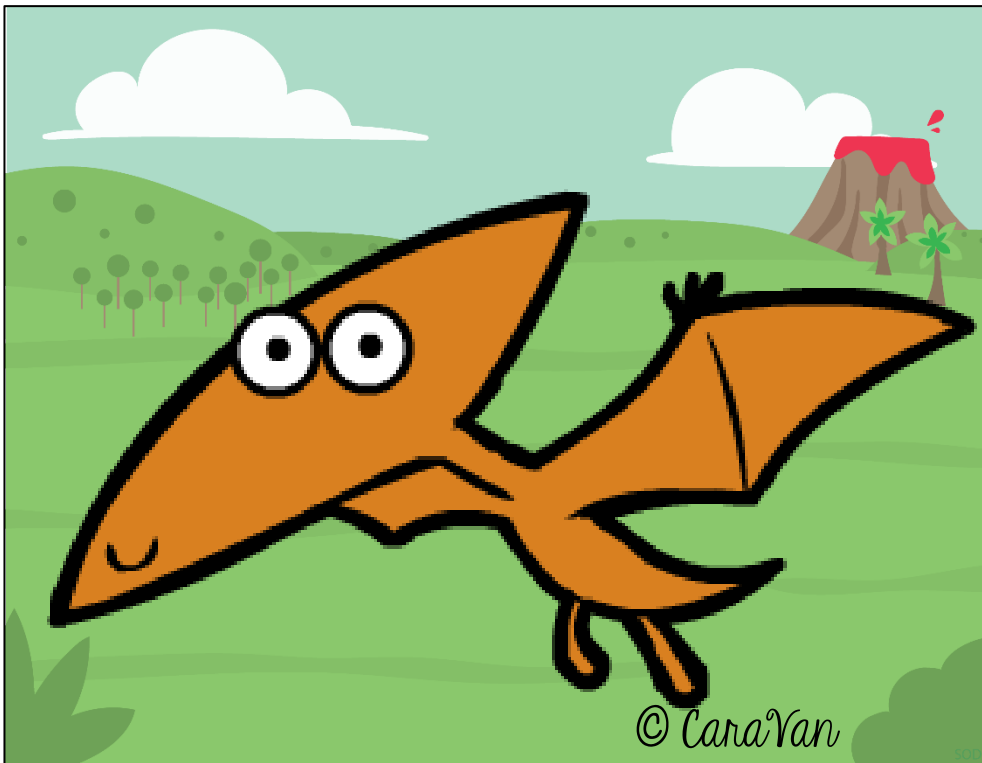
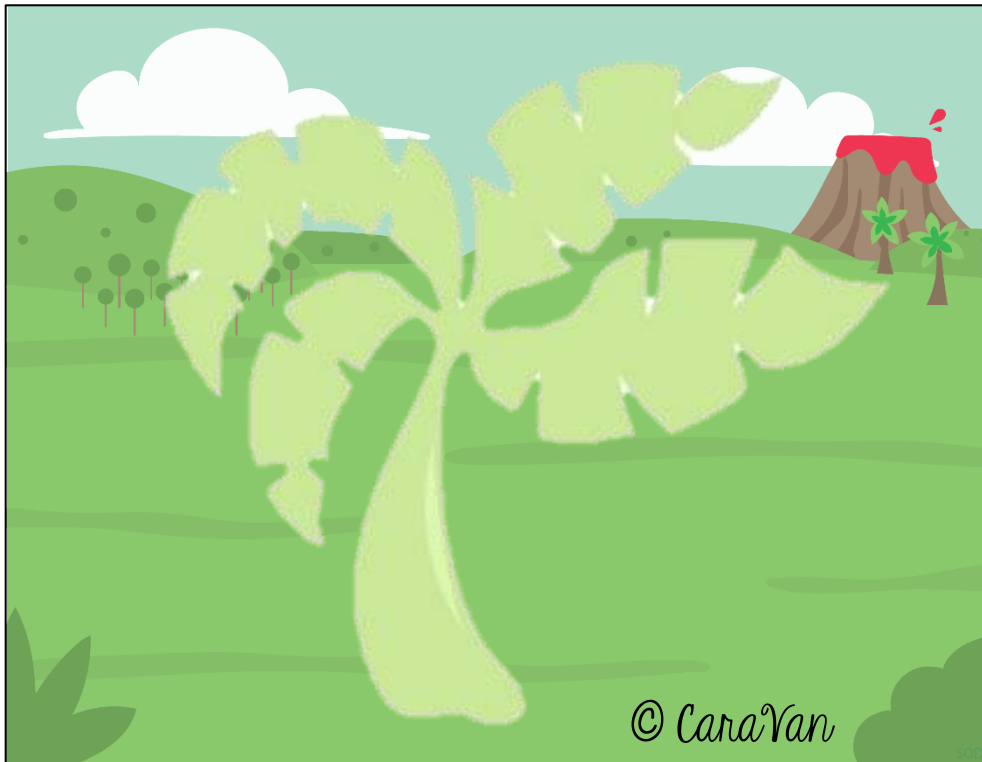
1. L'élève choisit une suite logique à compléter.
2. L'élève trouve l'image qui complète la suite sur le tapis de jeu.
3. L'élève place Bee-Bot sur le volcan (case départ).
4. L'élève programme Bee-Bot pour rejoindre l'image nécessaire pour compléter la suite logique jurassique.
5. L'élève place l'image correspondant à sa réponse au bout de la suite.

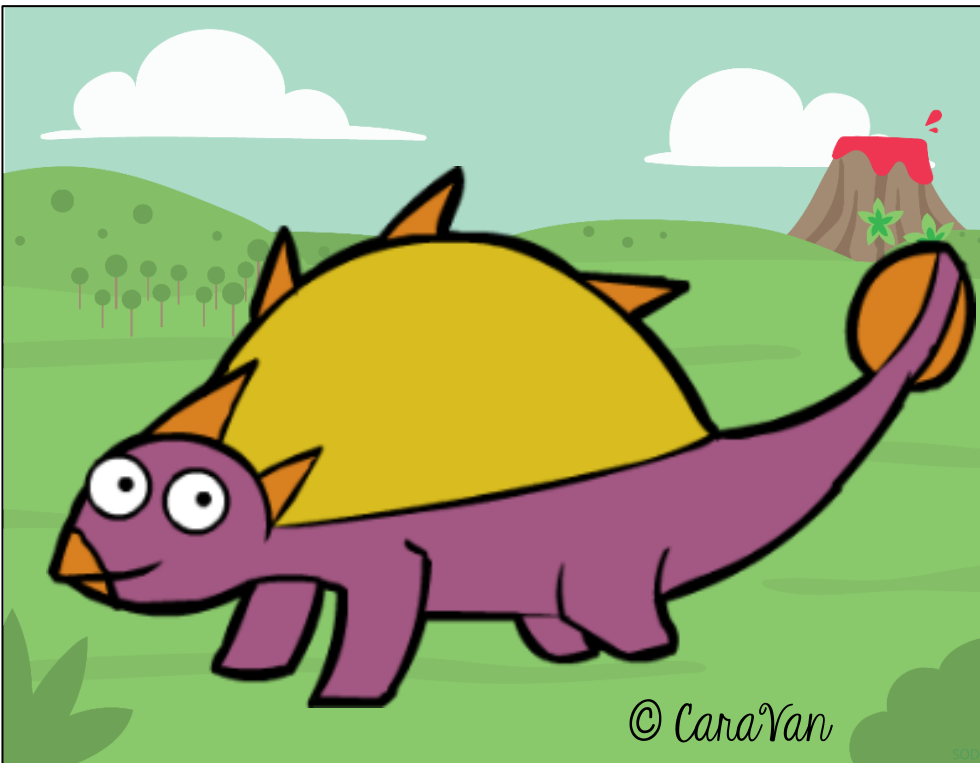
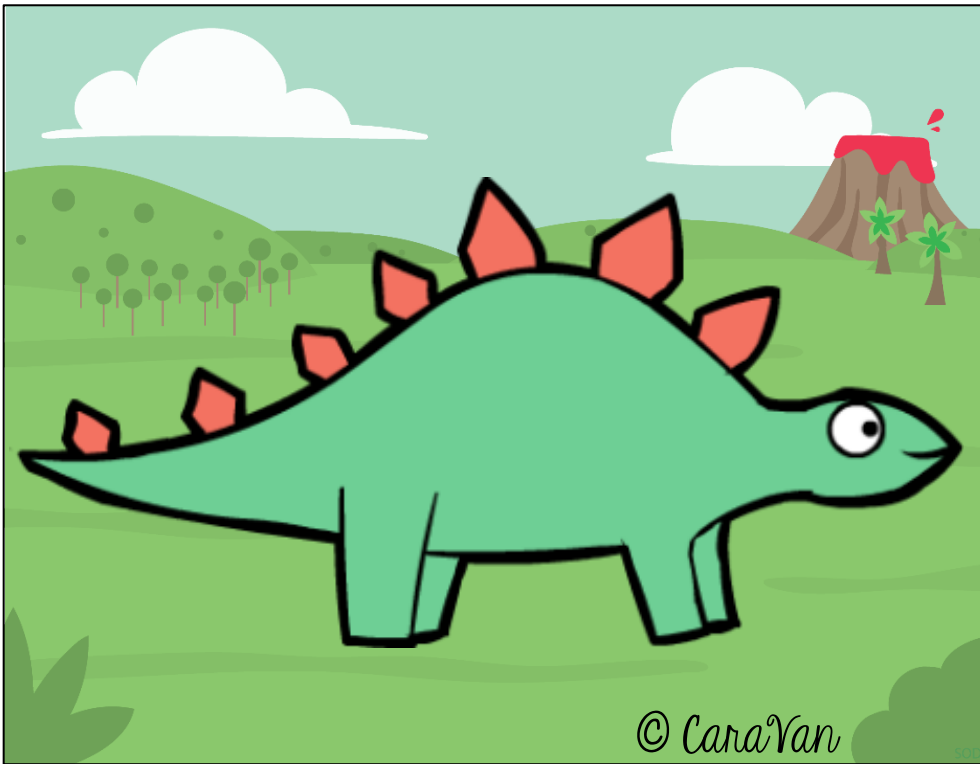


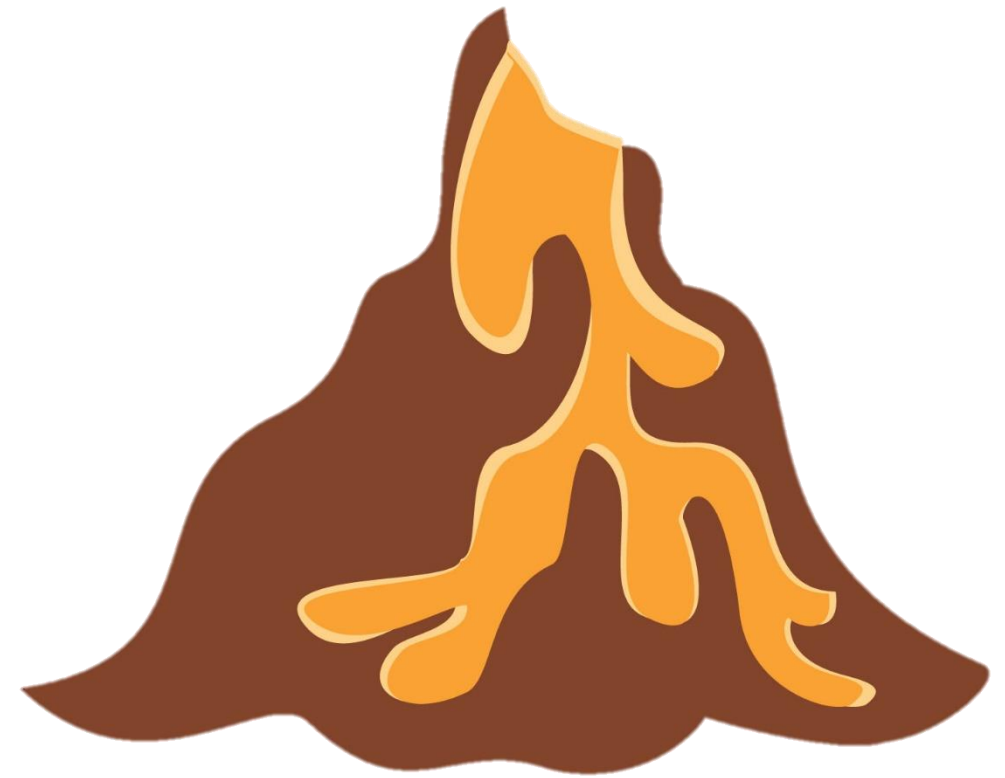
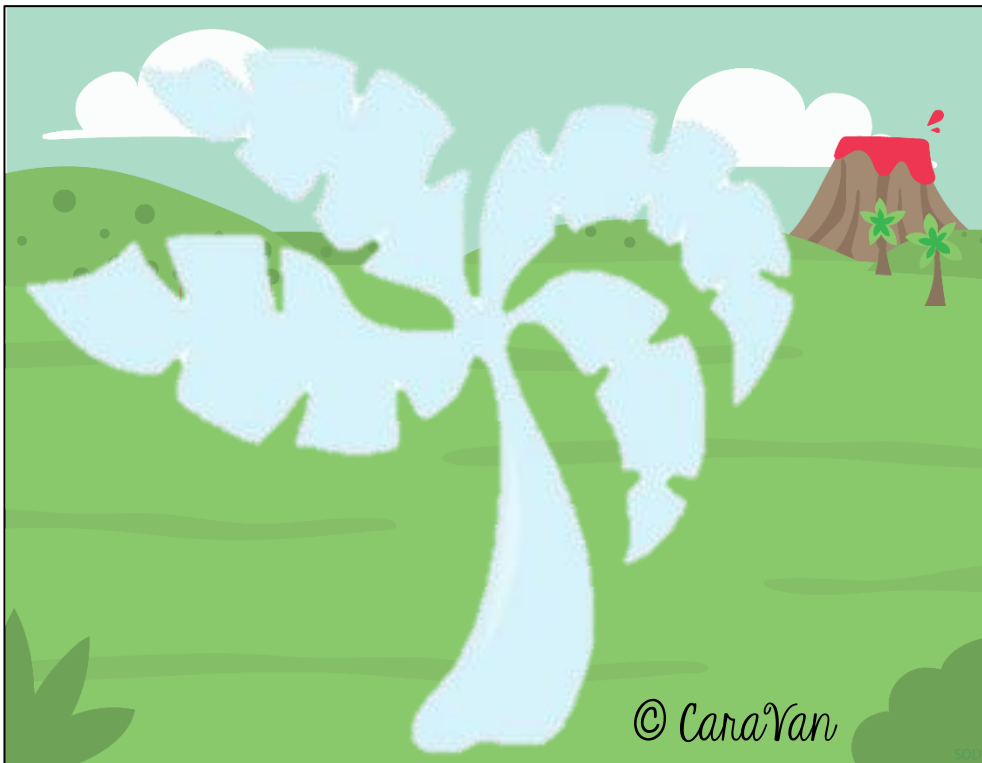
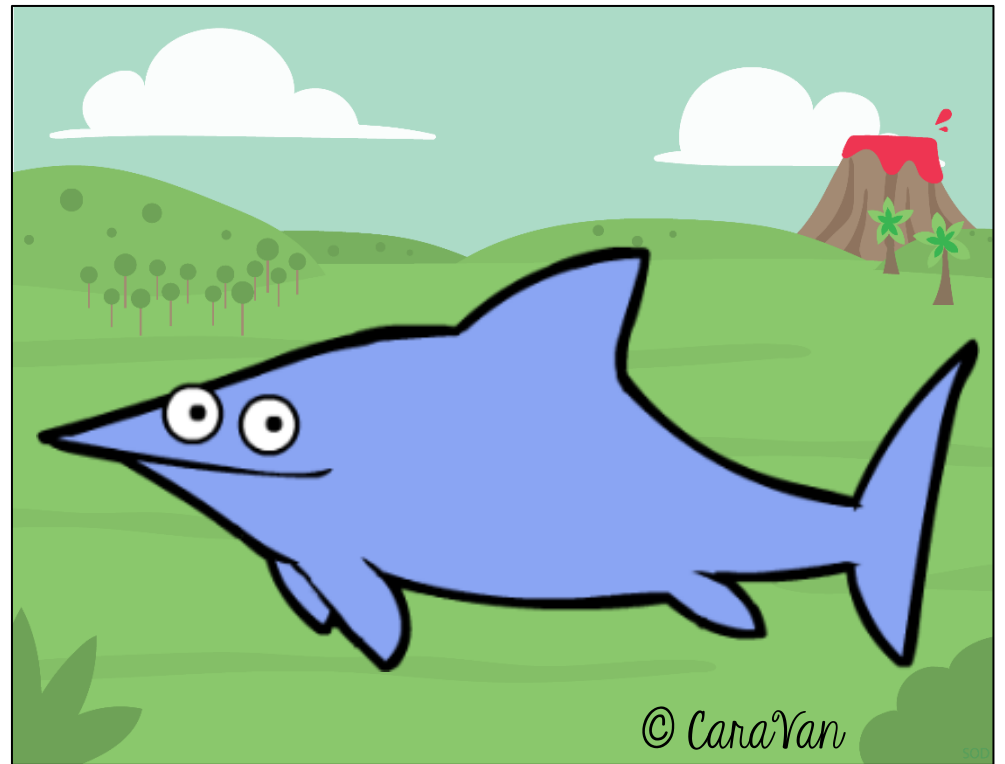
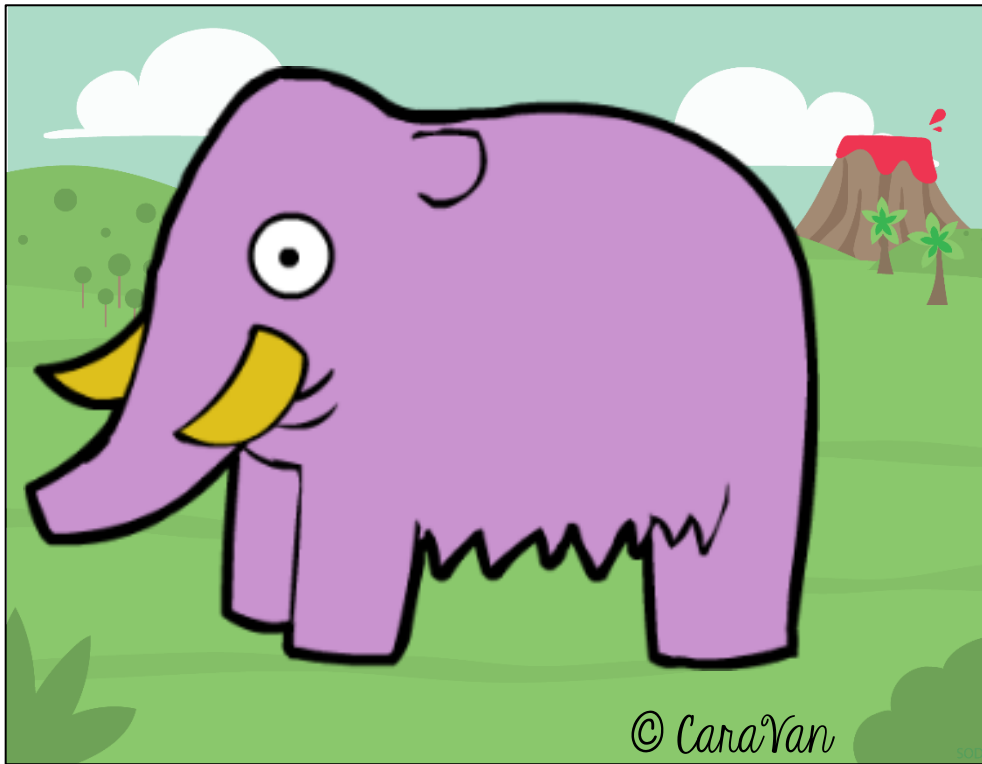
\* La disposition des images sur le tapis de jeu peut varier du modèle.





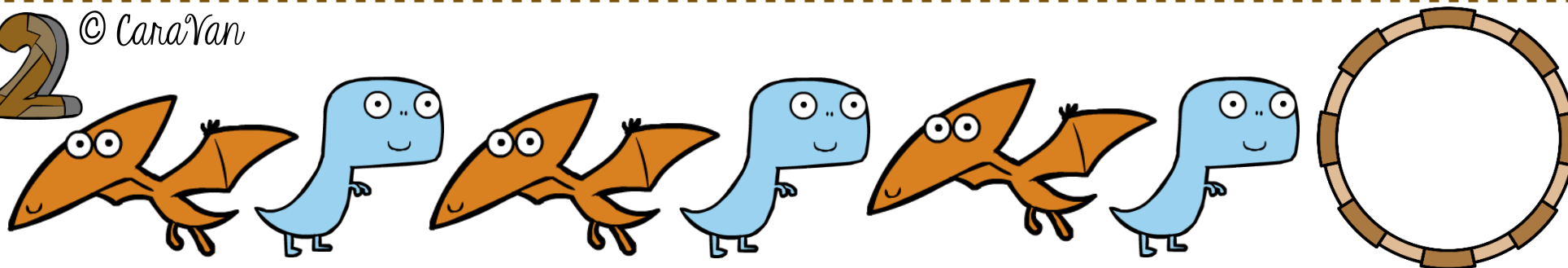




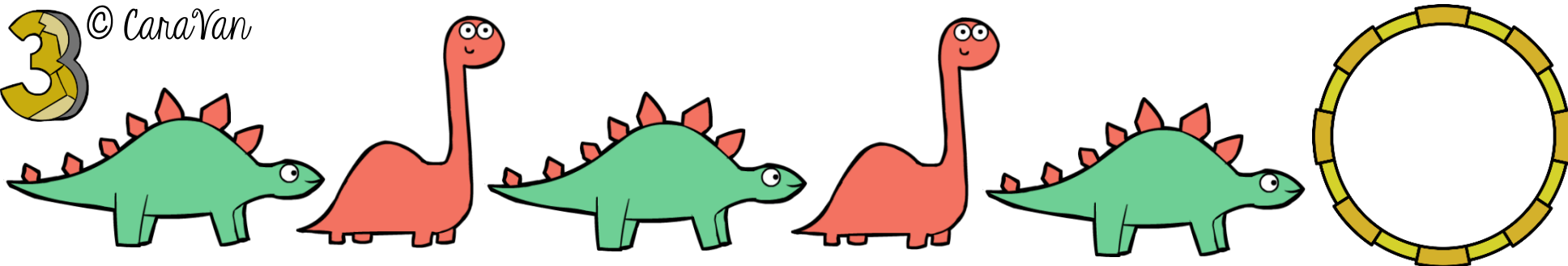
1 © CaraVan



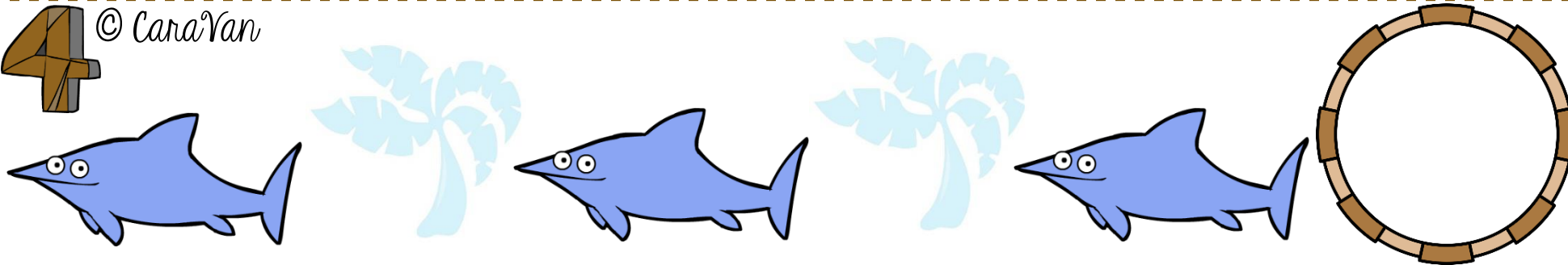
2 © CaraVan



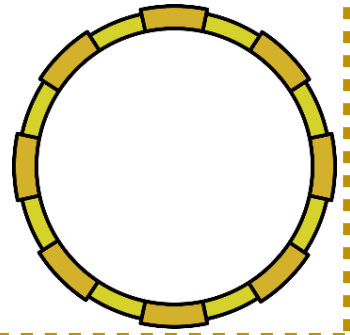
3 © CaraVan



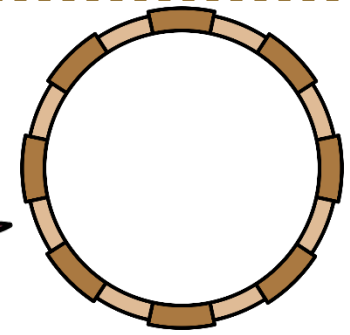
4 © CaraVan



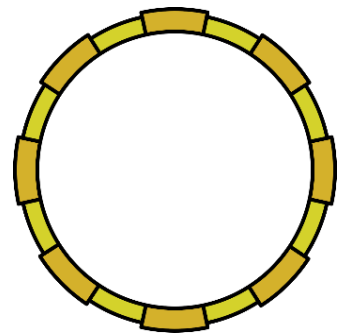
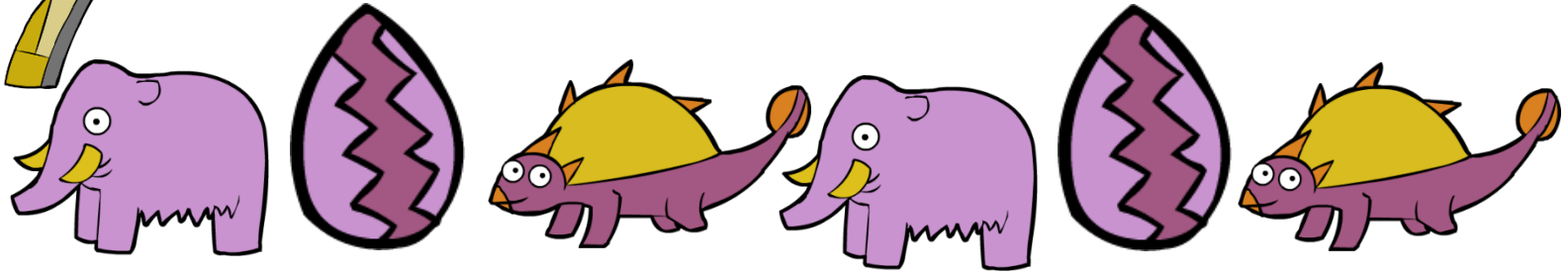
5 © CaraVan



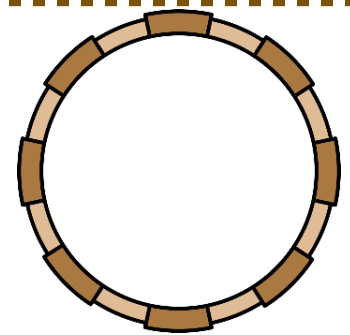
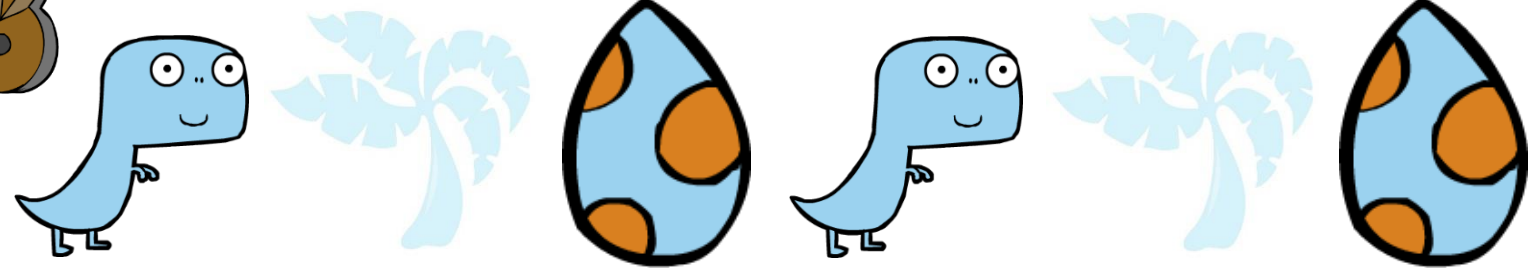
6 © CaraVan



7 © CaraVan

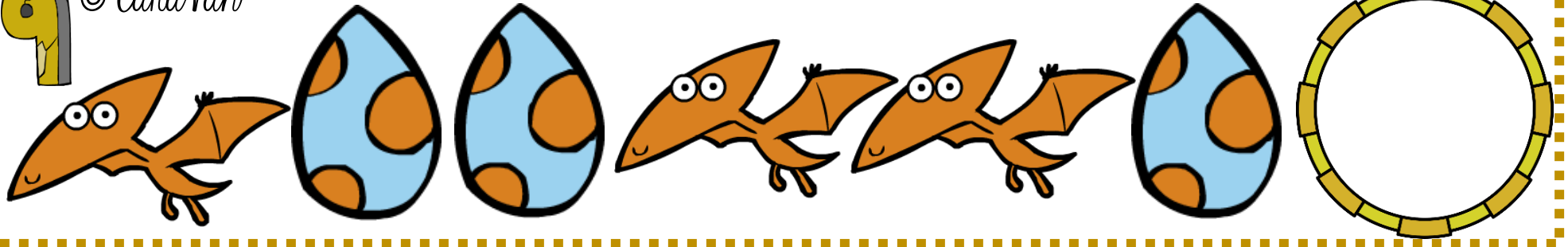


8 © CaraVan

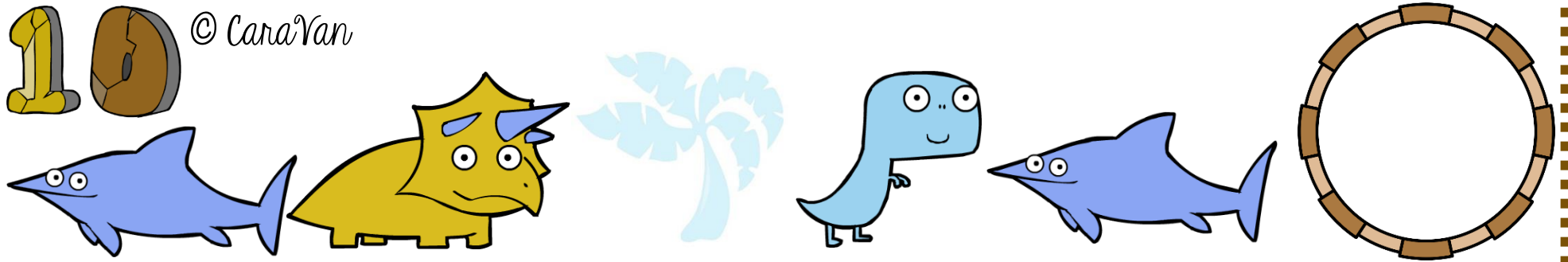




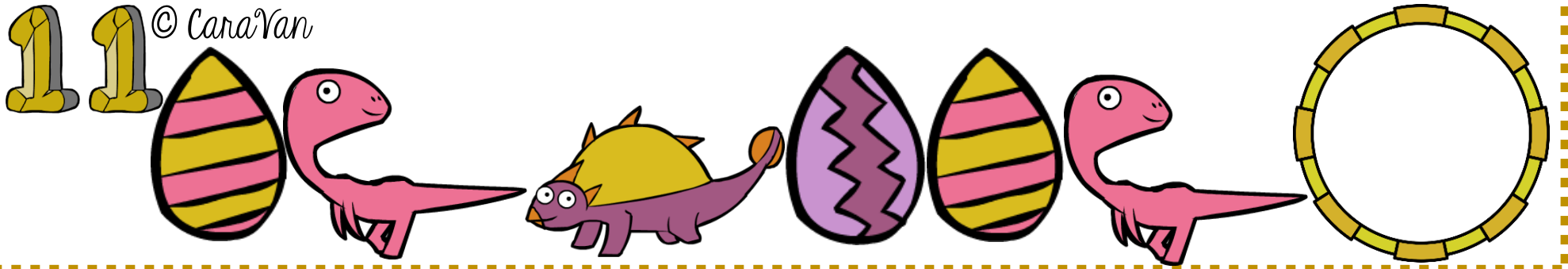
9 © CaraVan



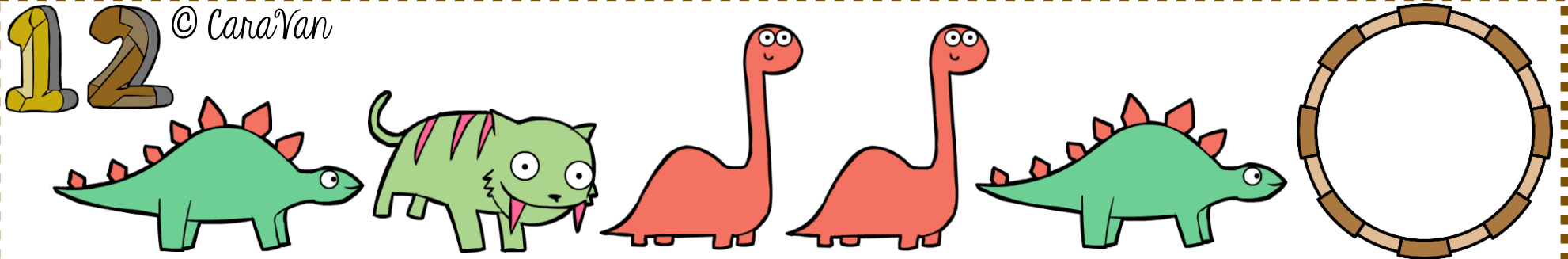
10 © CaraVan

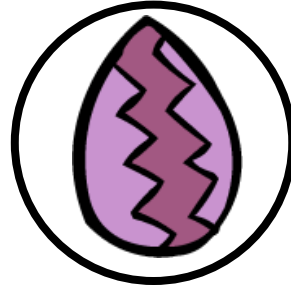
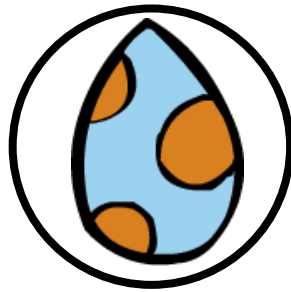
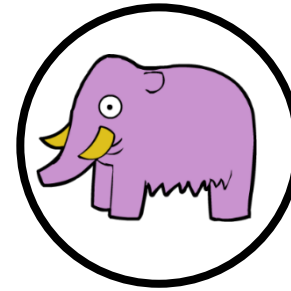
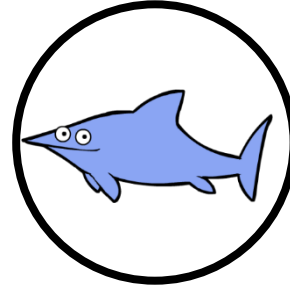
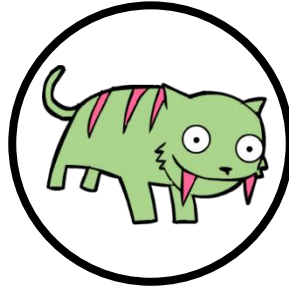
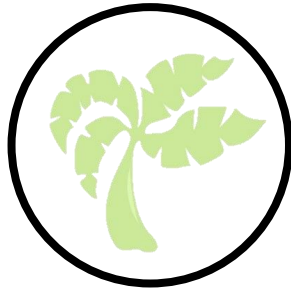
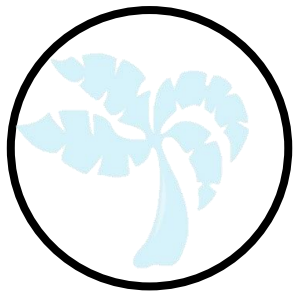
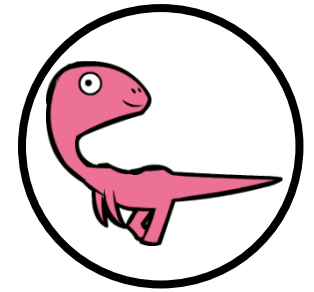
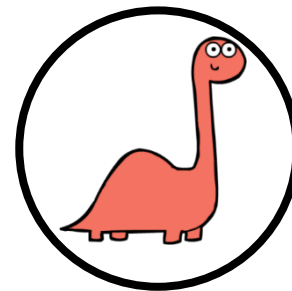
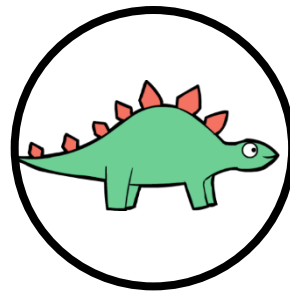
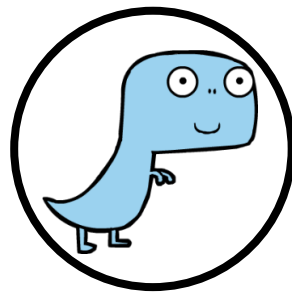
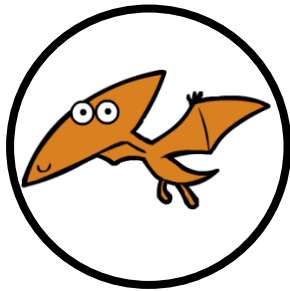
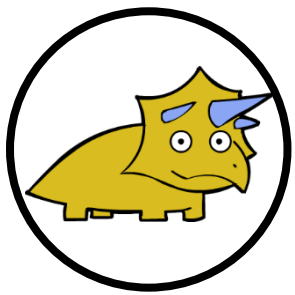


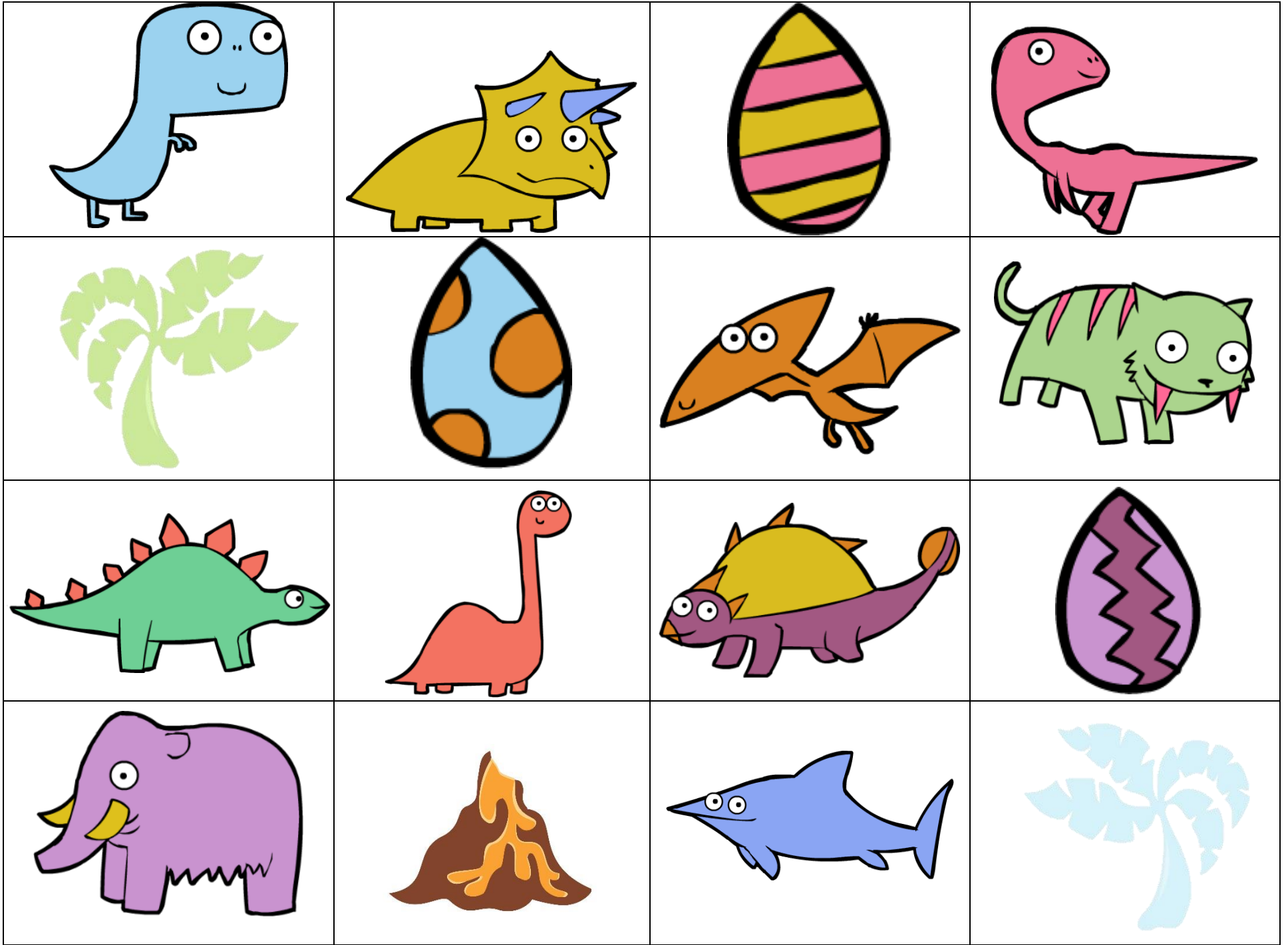
11 © CaraVan



12 © CaraVan







# Conditions d'utilisation

Cet atelier a été créé par Vanessa Côté et Caroline Ann Gagnon, enseignantes au préscolaire à la CSMB.

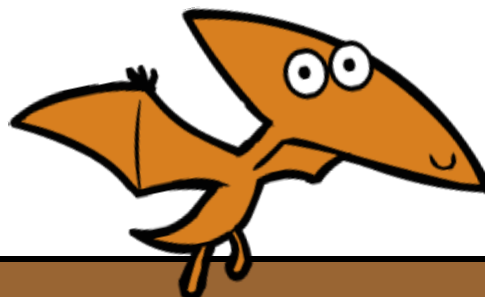
Il est interdit de modifier, de vendre ou d'enlever notre signature présente dans le document.

Si vous désirez partager ce document, il serait apprécié de référer vos collègues sur notre page Facebook « CaraVan ».



<https://www.facebook.com/groups/1541868205947224/>

\* Si vous constatez des erreurs dans nos documents, veuillez nous en faire part le plus rapidement possible afin que nous puissions faire les corrections nécessaires.



C'est logique!  
© CaraVan