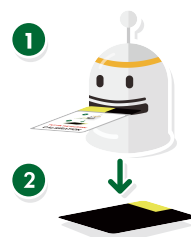
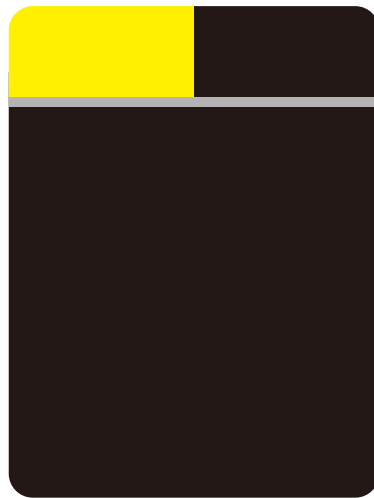




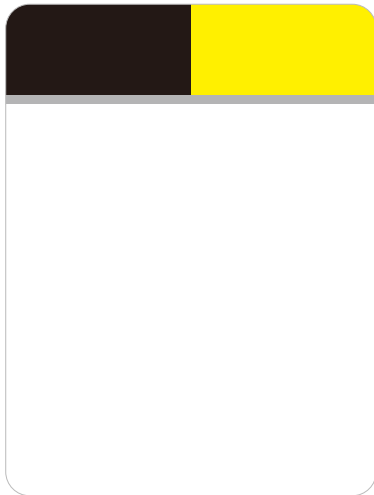
1
2

PUT ON THE BACKSIDE
CALIBRATION (W)



1
2

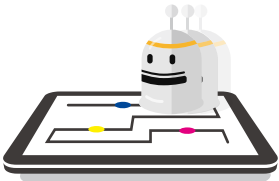
PUT ON THE BACKSIDE
CALIBRATION (B)



LINE TRACING



TILT MOTION
START - END



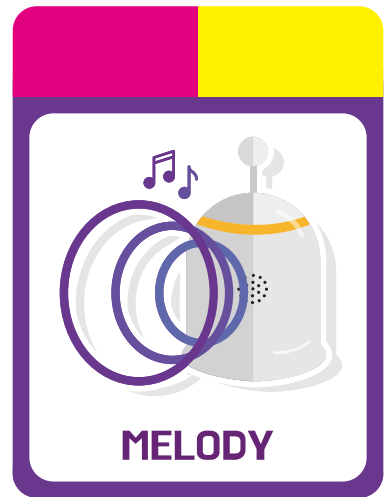
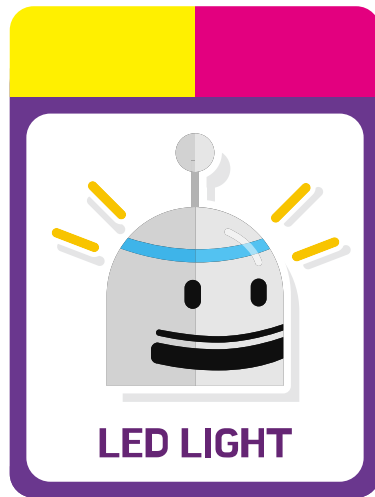
DIGITAL SCREEN



START



END





0
RESET



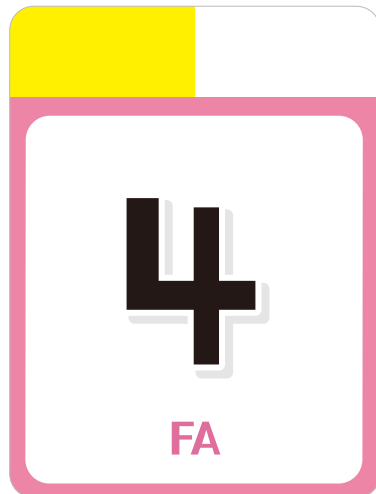
1
DO



2
RE



3
MI



4
FA



5
SOL



6
LA



7
TI



8
DO

